

Luminate Education Group  
Estates & Capital Projects Department  
Eastgate Offices  
07-25 Eastgate  
Leeds LS2 7LY

Client:

Notes:

Rev	Description	Date	Initial	Chd.

Project  
LUMINATE EDUCATION GROUP  
LCON\_Conservatoire Leeds

Title  
LEVEL 01 Floor Plan

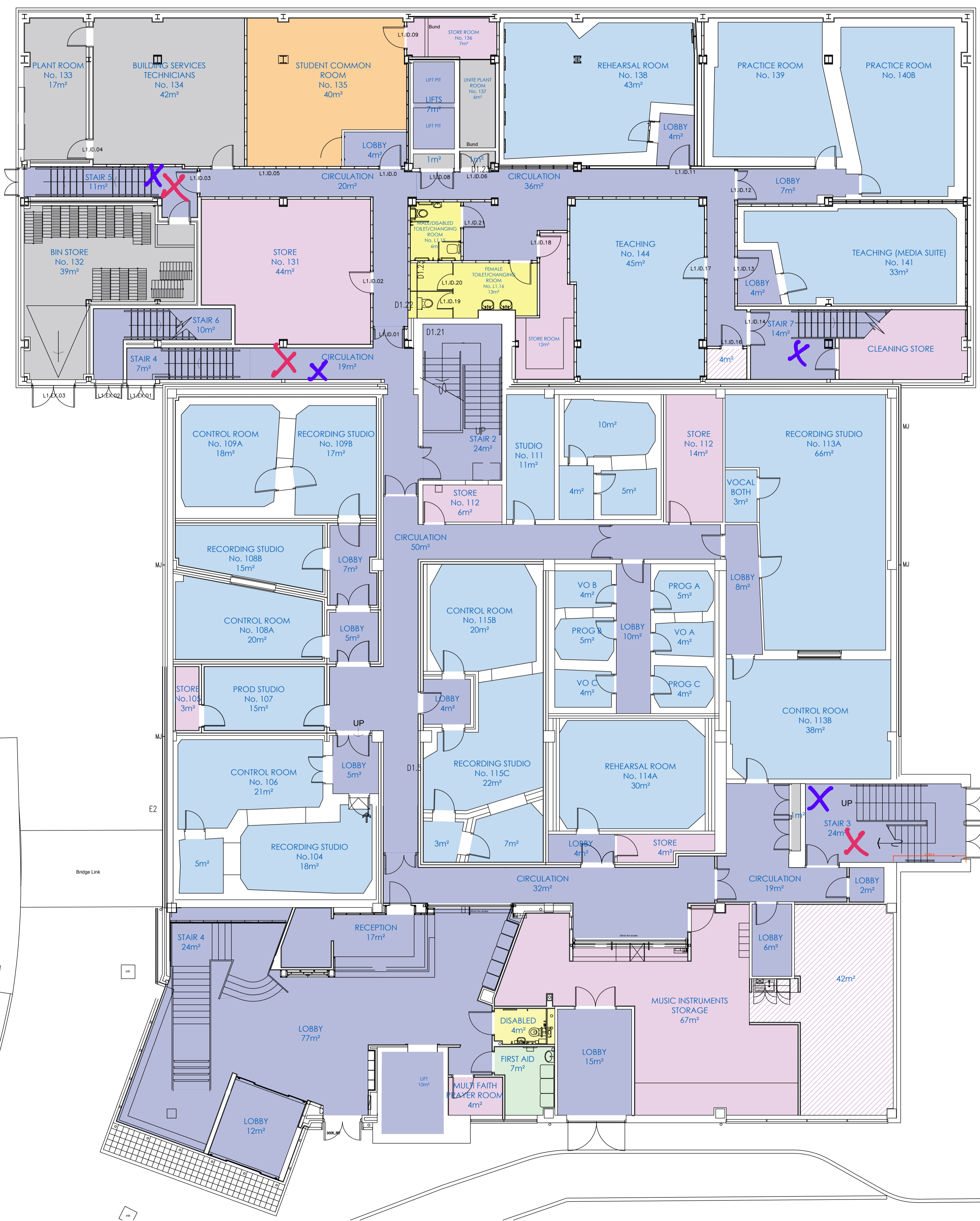
Dwg. No.	Rev.	Scales (if A1)
BR	0	1:100

Drawn	Date	Chd. by
BR	NOV 2024	

Refuge Area -

Descent Evac Chair -

Ascent Evac Chair -



**ROOM TYPE KEY:**

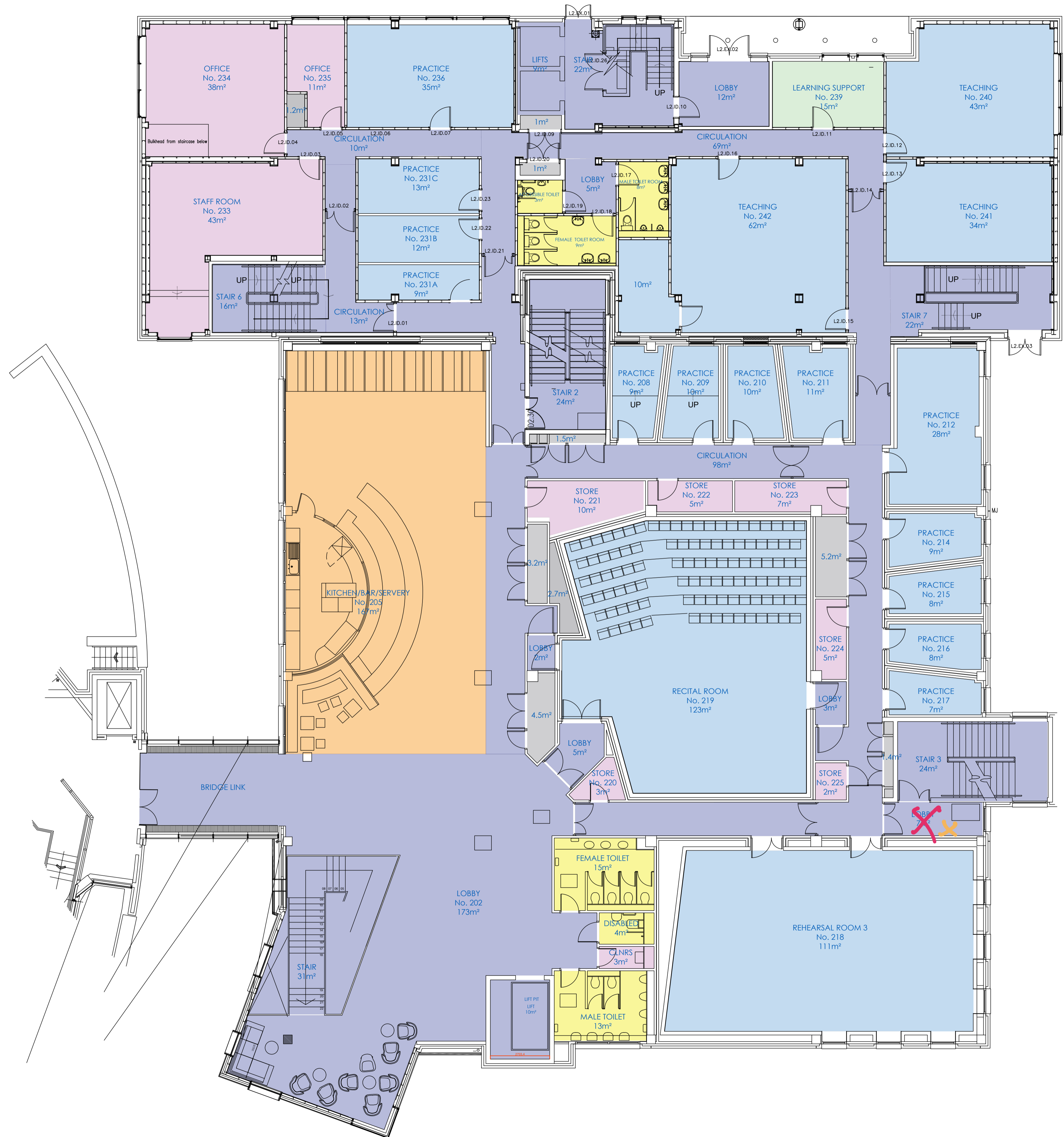
- educational spaces
- support and ancillary spaces
- social and informal spaces
- circulation spaces
- toilets and hygiene areas
- plant and services
- room type TBC
- student support and welfare

**LEEDS COLLEGE OF MUSIC 1st FLOOR**  
GIFA:1696m<sup>2</sup> NIA:1565m<sup>2</sup>

Luminate Education Group  
Estates & Capital Projects Department  
Eastgate Offices  
07-25 Eastgate  
Leeds LS2 7LY

Client:

Notes:



**ROOM TYPE KEY:**

- educational spaces
- support and ancillary spaces
- social and informal spaces
- circulation spaces
- toilets and hygiene areas
- plant and services
- student support and welfare

**LEEDS COLLEGE OF MUSIC 2nd FLOOR**  
GIFA:1630m² NIA:1437m²


Construction Issue			
Rev	Description	Date	Initial Chd.

**Project**  
LUMINATE EDUCATION GROUP  
LCON\_Conservatoire Leeds

**Title**  
LEVEL 02 Floor Plan

Dwg. No.	Rev.	Scale (if A1)
BR	0	1:100

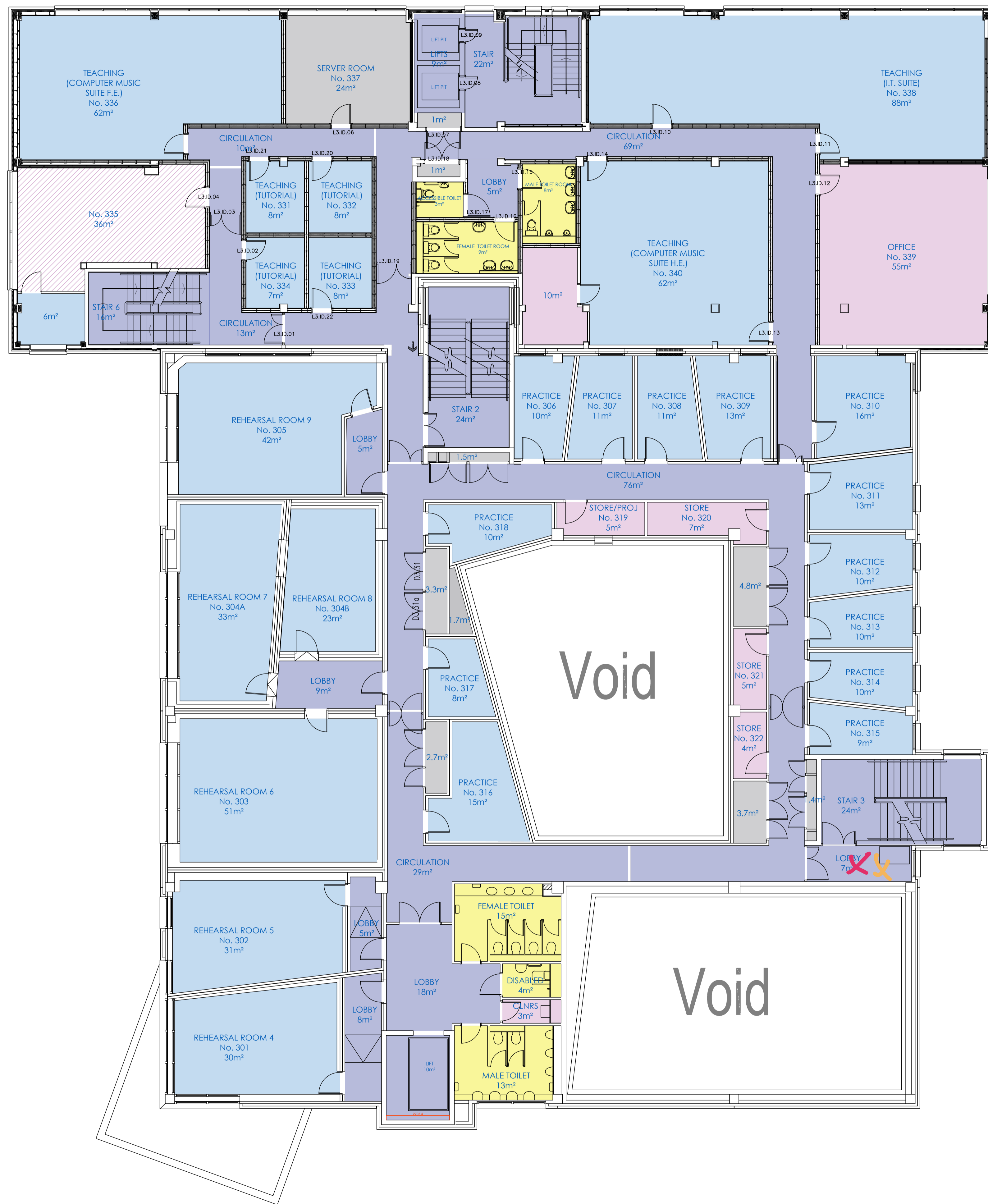
Drawn	Date	Chd. by
BR	NOV 2024	



**Luminate Education Group**  
Estates & Capital Projects Department  
Eastgate Offices  
07-25 Eastgate  
Leeds LS2 7LY

**Client:**

**Notes:**



**ROOM TYPE KEY:**

- educational spaces
- support and ancillary spaces
- social and informal spaces
- circulation spaces
- toilets and hygiene areas
- plant and services
- room type TBC

**LEEDS COLLEGE OF MUSIC 3rd FLOOR**  
GIFA:1600m² NIA:1247m²

Construction Issue			
Rev	Description	Date	Chd.

**Project**  
LUMINATE EDUCATION GROUP  
LCON\_Conservatoire Leeds

**Title**  
LEVEL 03 Floor Plan

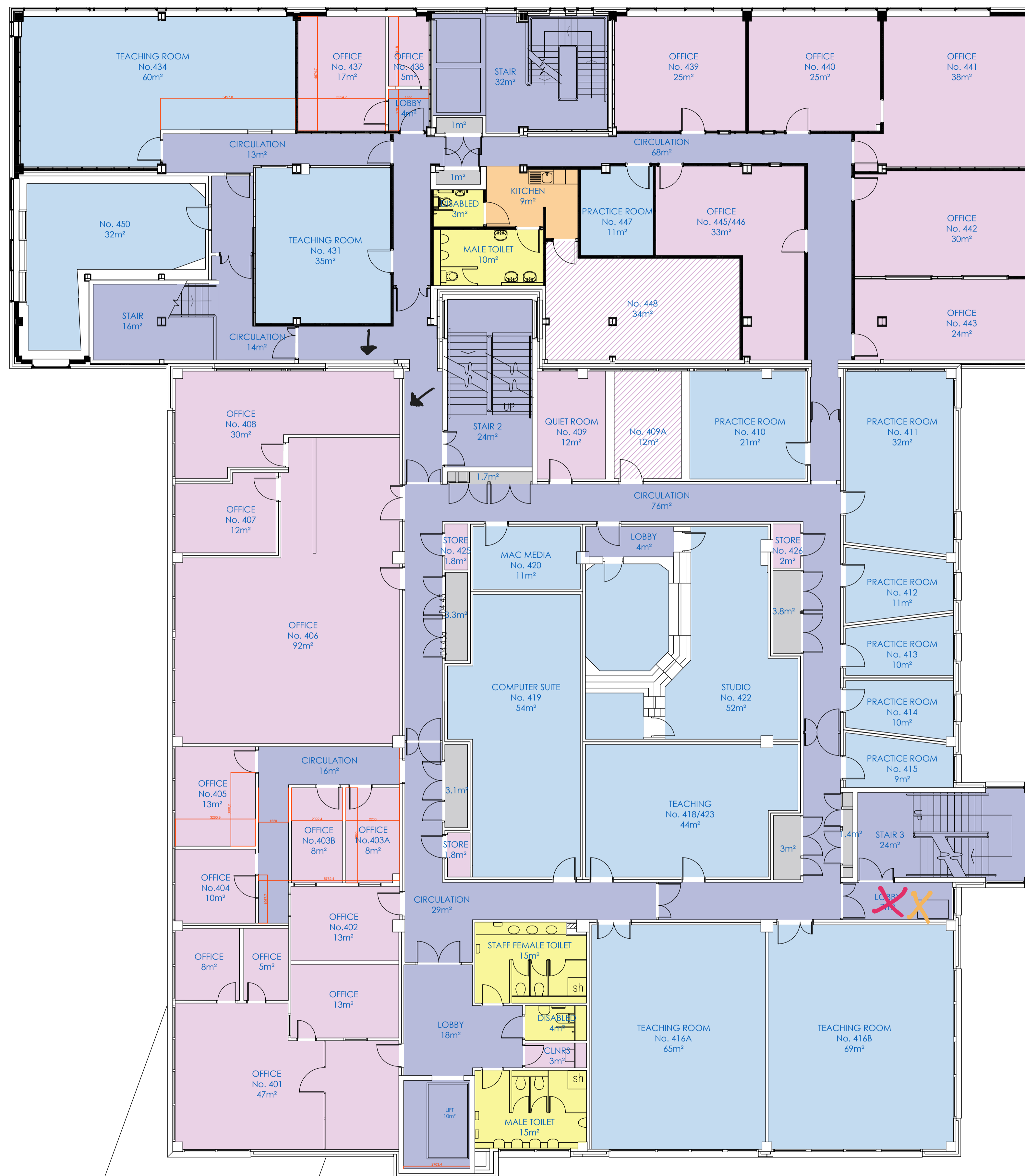
Dwg. No.	Rev.	Scale (if A1)
BR	0	1:100

Drawn	Date	Chd. by
BR	NOV 2024	

Luminate Education Group  
Estates & Capital Projects Department  
Eastgate Offices  
07-25 Eastgate  
Leeds LS2 7LY

Client:

Notes:



**ROOM TYPE KEY:**

- educational spaces
- support and ancillary spaces
- social and informal spaces
- circulation spaces
- toilets and hygiene areas
- plant and services
- room type TBC

**LEEDS COLLEGE OF MUSIC 4th FLOOR**  
GIFA:1600m<sup>2</sup> NIA:1477m<sup>2</sup>

Construction Issue			
Rev	Description	Date	Chd.

**Project**  
LUMINATE EDUCATION GROUP  
LCON\_Conservatoire Leeds

**Title**  
LEVEL 04 Floor Plan

Dwg. No.	Rev.	Scales (if A1)	
BR	0	1:100	

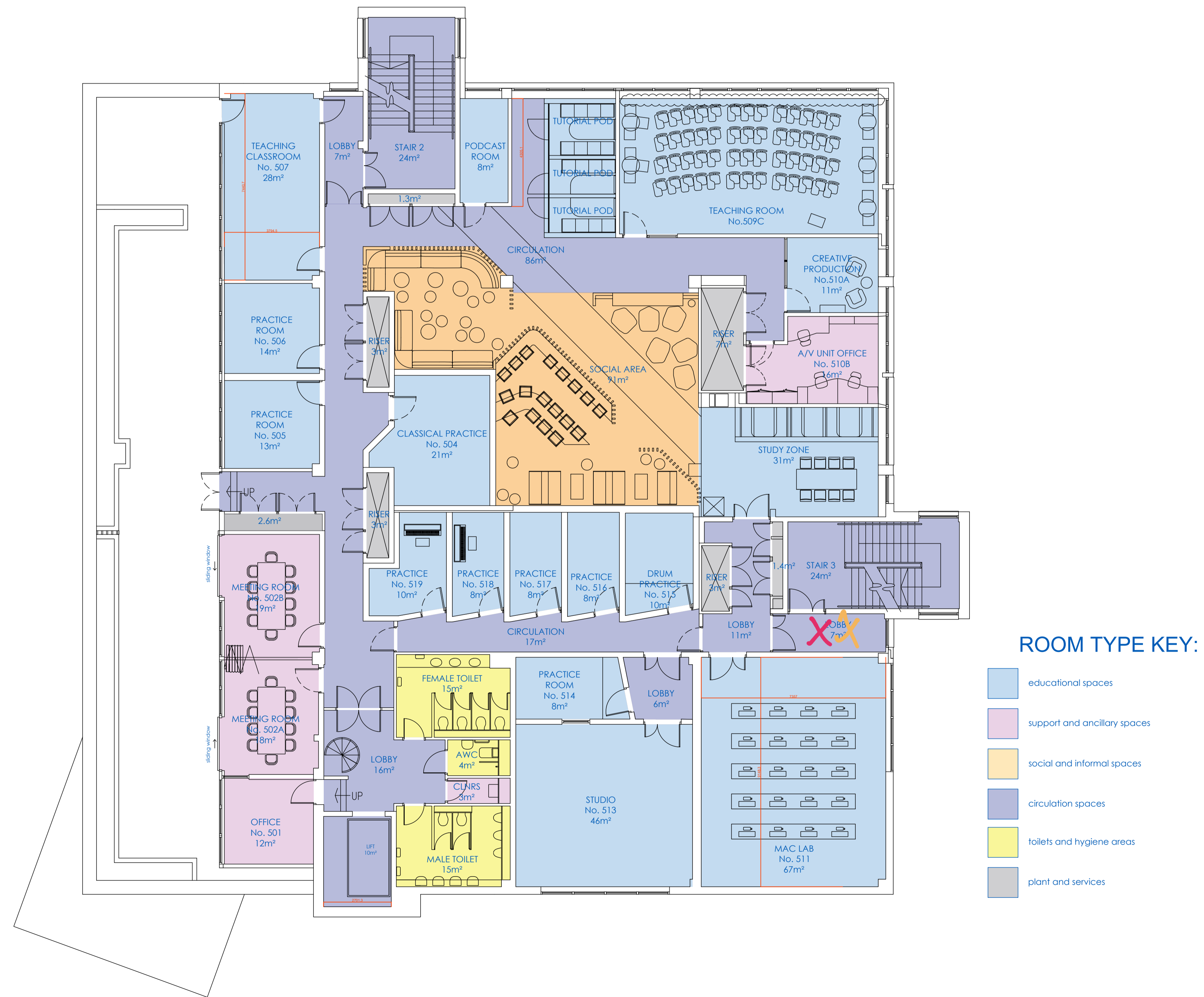
Drawn	Date	Chd. by
BR	NOV 2024	



**Luminate Education Group**  
Estates & Capital Projects Department  
Eastgate Offices  
07-25 Eastgate  
Leeds LS2 7LY

**Client:**

**Notes:**



**LEEDS COLLEGE OF MUSIC 5th FLOOR**  
GIFA:844m<sup>2</sup> NIA:789m<sup>2</sup>


Construction Issue			
Rev	Description	Date	Chd.

**Project**  
LUMINATE EDUCATION GROUP  
LCON\_Conservatoire Leeds

**Title**  
LEVEL 05 Floor Plan

Dwg. No.	Rev.	Scales (if A1)	
BR	0	1:100	

Drawn	Date	Chd. by
BR	NOV 2024	